

### VP1500WS



On board ship gas freeing is carried out for various reasons, change of cargo, health and safety and tank maintenance is a few but it is essential that it is done efficiently and safely. All of our fans competently achieve these aims and are well respected in the marine market when used with our range of ancillaries.

The VP1500WS, VP1000WS and VP750WS are high performance Stainless Steel axial flow water driven fans. The non-sparking fans offered as either high, medium or low flow, can achieve deep penetration suitable for all types of crude oil, chemical and product tankers.

#### Key features

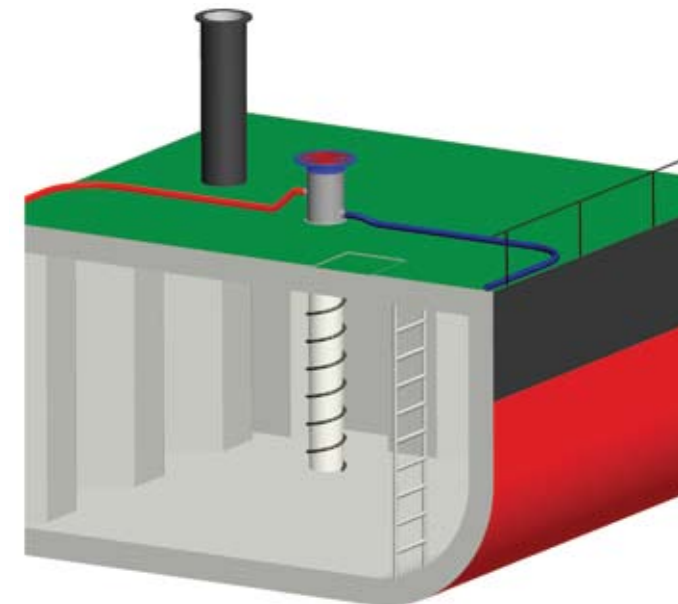
- ▶ Designed and Class Approved for use in Hazardous Areas.
- ▶ Supply or Extract mode by simple reversal
- ▶ Integral 'Direct In-Line' drive, no gearbox to maintain or fail
- ▶ Alternative deck flanges and Fan connections available

#### Ancillary equipment available

Layflat and Rigid Hoses, Ducting, Various Fittings and Adaptors, Transport Trolley.

Please see separate information sheet for details.

#### Typical installation

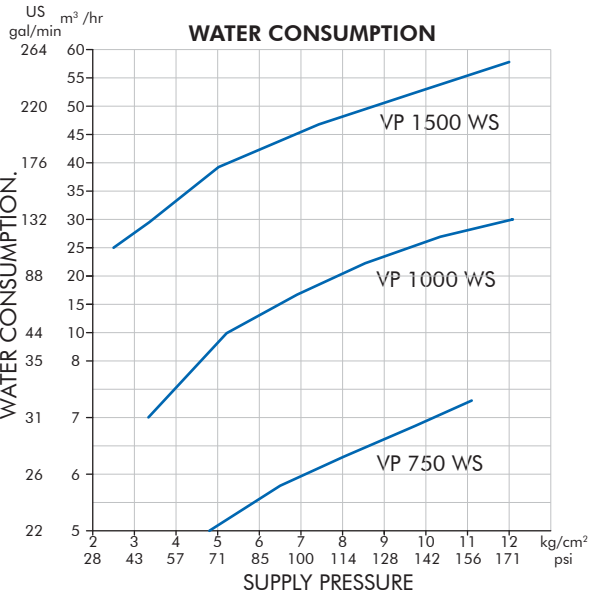
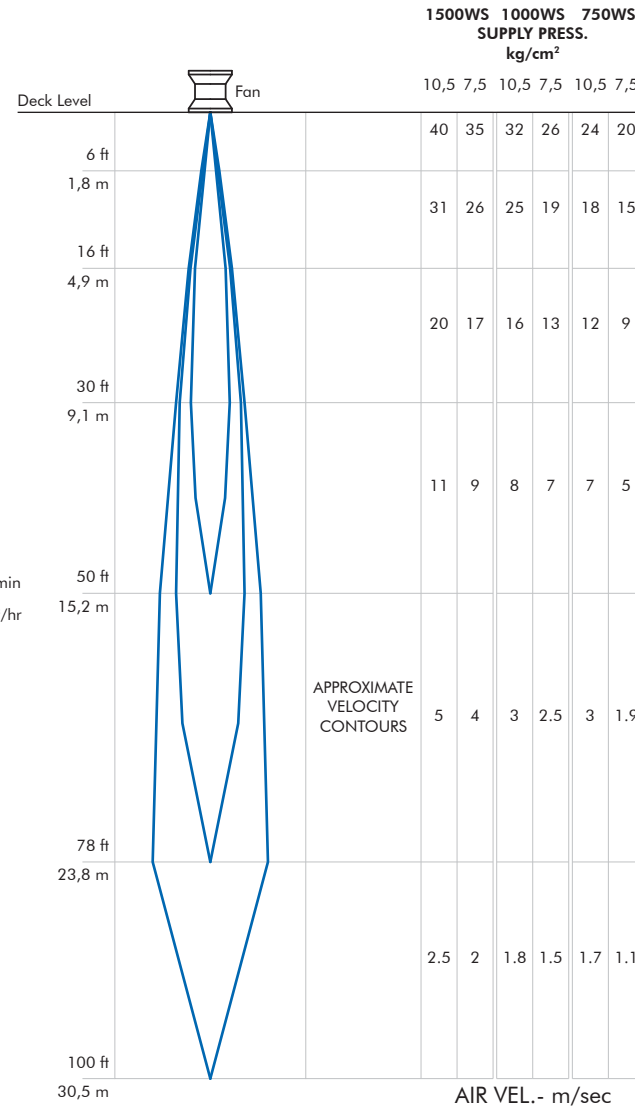
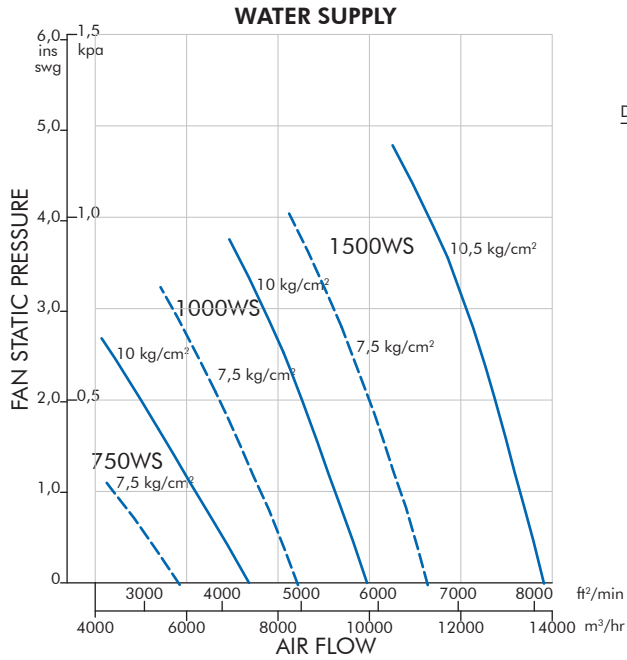


# VP1500WS, VP1000WS and VP750WS

## Gas Freeing Fans



victor marine



|                            |                         | VP1500WS                                     | VP1000WS                                     | VP750WS      |
|----------------------------|-------------------------|--|--|--------------|
| <b>Max air flow</b>        | m <sup>3</sup> /hr      | 14800  | 10350  | 7600         |
|                            | cu.ft./min              | 8710   | 6090   | 5120         |
| <b>Air velocity</b>        | m/s                     | 5.0 @ 25mtr                                  | 3.6 @ 25mtr                                  | 3.0 @ 25mtr  |
|                            | below deck              | below deck                                   | below deck                                   | below deck   |
|                            | ft/s                    | 16.4 @ 82ft                                  | 10.2 @ 82ft                                  | 9.9 @ 82ft   |
| <b>Static pressure</b>     |                         |  |  |              |
|                            | Max                     | Kpa  | 1.92   | 0.85         |
| Operational                | ins/swg                 | 7.75   | 3.43   | 2.91         |
|                            | m <sup>3</sup> /hr      | 13750 @250Pa                                 | 13750 @250Pa                                 | 13750 @250Pa |
| <b>Water flow capacity</b> |                         |  |  |              |
|                            | m <sup>3</sup> /hr      | 25 to 56                                     | 13 to 27                                     | 4 to 8       |
| <b>Operating pressure</b>  |                         |  |  |              |
|                            | Max                     | kg/cm <sup>2</sup>                           | 12   |              |
| Optimum                    | kg/cm <sup>2</sup>      | 5 - 10.5                                     |  |              |
| <b>Materials</b>           | Casing                  | AISI 316 St/St                               |  |              |
|                            | Impeller                | Alloy, Nickel Coated                         |  |              |
|                            | Fastenings              | AISI 304 & 316 St/St                         |  |              |
|                            | Connections             | AISI 316 St/St                               |  |              |
|                            | <b>Lubrication</b>      | 'Sealed for Life' grease lubricated bearings |  |              |
| <b>Installation</b>        | Min deck opening        | Ø  | 260mm (10.3 inches)                          |              |
|                            | Std deck flange to suit | Ø  | ID 318mm with 10 x 23mm Holes on a 389mm PCD |              |
|                            | Water connections       |  | 2" BSP OR 21/2" ANSI Male thread             |              |
| <b>Weight</b>              |                         |  |  |              |
|                            | Operational             | kgs  | 27   |              |
| Packed                     | kgs                     | 32.5   |  |              |

The manufacturers reserve the right to alter the specification and data to incorporate improvements in design. Certified drawings will be issued on request.

© All details copyright Victor Marine Ltd, November 2007

## Victor Marine Limited

Arisdale Avenue, South Ockendon, Essex, RM15 5DP, United Kingdom.

E-mail : sales@victormarine.com

Tel : +44 (0) 1708 856121

Website : www.victormarine.com

Fax : +44 (0) 1708 857366